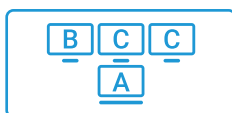


# TC800

## 9-in-1 Hub & SSD & Stand



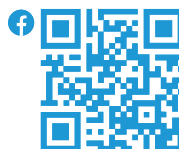
The LEMORELE TC800 is a docking station designed specifically for the Mac mini M4 / M4 Pro, with a port layout that perfectly matches the device while maintaining a clean and integrated look. It supports dual 4K@60Hz video output via DP 1.4 and HDMI 2.0 for extended or mirrored displays. The dock includes 2 × USB-A (5Gbps), 1 × USB-A (10Gbps), and 1 × USB-C (10Gbps) for high-speed data transfer, along with built-in SD 3.0 and TF 3.0 card slots for convenient media access. A bottom NVMe M.2 SSD slot supports speeds up to 10Gbps for expanding high-speed storage, and the plug-and-play design ensures easy use without drivers.

- ▶ Equipped with USB-C 3.2 Gen2 and USB-A 3.2 Gen2 ports, supporting up to 10Gbps transfer speed for seamless large file transfers and high-speed external drives.
- ▶ 4K Dual Display Expansion
- ▶ Supports HDMI 2.0 and DP1.4 outputs, delivering up to 4K@60Hz for multi-monitor setups, entertainment, and creative design workflows.
- ▶ Built-in NVMe M.2 slot with up to 10Gbps speed, ideal for video editing, 3D rendering, and intensive data applications.

Site: [www.lemorele.com](http://www.lemorele.com)

Linkedin: [www.linkedin.com/company/lemorele/](http://www.linkedin.com/company/lemorele/)

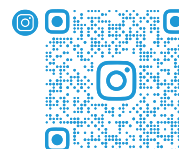
Copyright © 2024 Lemorele Group. All Rights Reserved



@LEMORELE



@LEMORELE

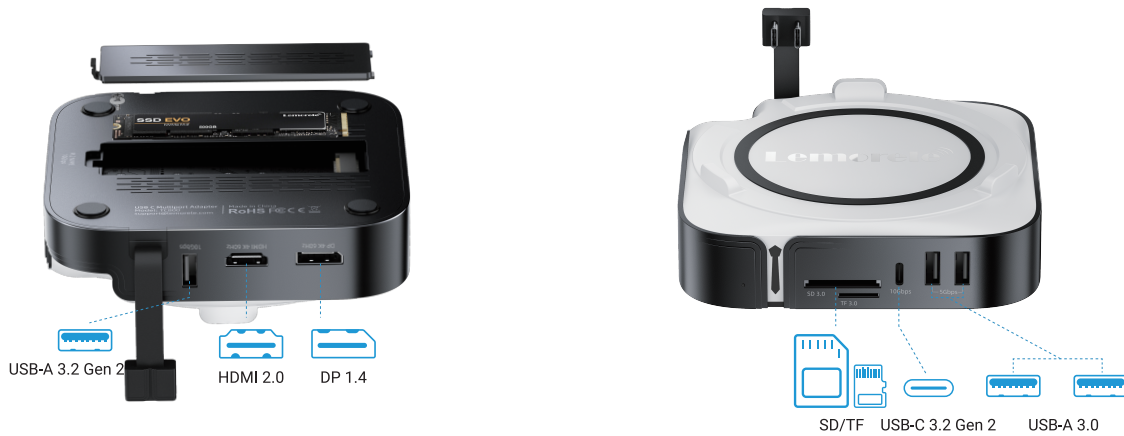


@LEMORELE

## DESCRIPTION

The LEMORELE TC800 is a docking station specially designed for the Mac mini M4, with a port layout that perfectly matches the Mac mini M4 / M4 Pro, providing powerful expansion capabilities while maintaining a clean and integrated look. It supports dual 4K@60Hz video output through DP 1.4 and HDMI 2.0, allowing dual-display extended or mirror modes for enhanced productivity. The dock features multiple high-speed data ports, including 2 × USB-A (5Gbps), 1 × USB-A (10Gbps), and 1 × USB-C (10Gbps) for fast data transfer and device connectivity. It also includes a professional card reader with built-in SD 3.0 and TF 3.0 slots, making it ideal for photography and video workflows. In addition, the bottom-mounted NVMe M.2 SSD expansion slot supports NVMe SSDs with speeds up to 10Gbps, enabling easy expansion of high-speed storage for video editing and large file transfers. With its plug-and-play, driver-free design, the TC800 connects instantly and preserves the clean, minimalist experience of the Mac mini.

## APPLICATION DIAGRAM



## SPECIFICATIONS

<b>Input Interface</b>	<b>USB C(Type-C)</b>	2*USB-C 3.2 Gen 2
<b>Output Interface</b>	<b>HDMI 2.0</b>	1* HDMI , 4K@60Hz/4K@30Hz/1080@60Hz
	<b>DP 1.4</b>	1* DP , 4K@60Hz/4K@30Hz/1080@60Hz
	<b>USB-A 3.2 Gen 2</b>	1* USB-A 3.2 Gen 2 , Data up ot 10Gbps
	<b>SD/TF 3.0</b>	1*TF, 1*SD
	<b>USB A 3.0</b>	2*USB A 3.0, up to 5Gbps
	<b>USB-C 3.2 Gen 2</b>	1* USB-C 3.2 Gen 2 , Data up ot 10Gbps
	<b>NVMe M.2 10Gbps</b>	1* NVMe M.2 , Data up ot 10Gbps

For complete specifications, please go to [us.lemorele.com](http://us.lemorele.com) Specifications are subject to change without notice.